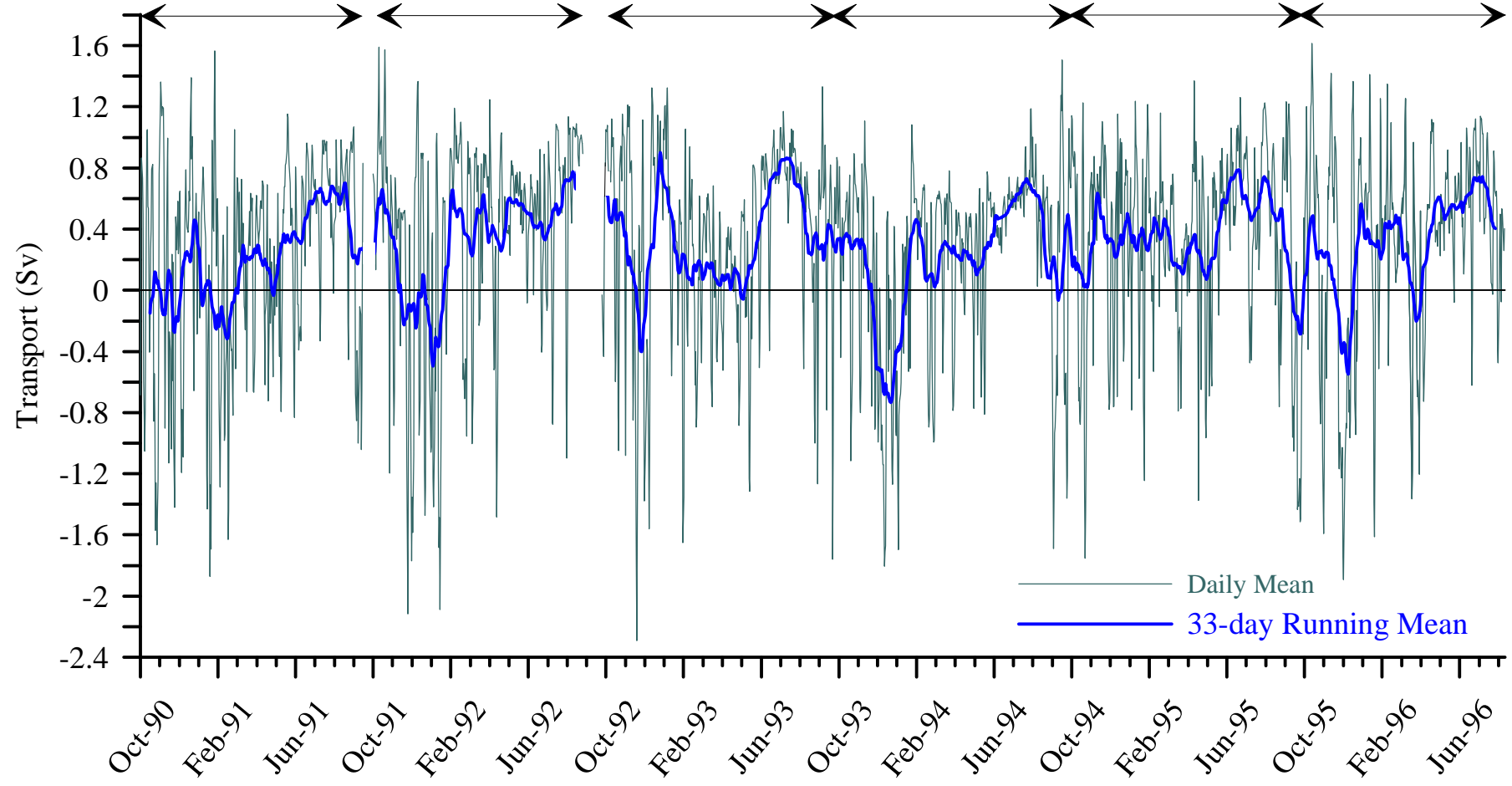


Barrow Canyon Transport [October 1990 - August 1996]
 (Downcanyon > 0; Upcanyon < 0)

Year	90-91	91-92	92-93	93-94	94-95	95-96
Mean (Sv)	.19 (Min)	.36	.33	.21	.38 (Max)	.27
σ^2	.46	.48	.39	.36	.33	.47



Mean = 0.29 Sv \pm .07 Sv (95% C.L.)
 s = 0.64 Sv
 $N_{eff} = 350$ ($\tau \sim 6$ days)